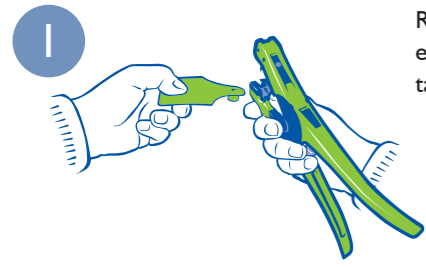
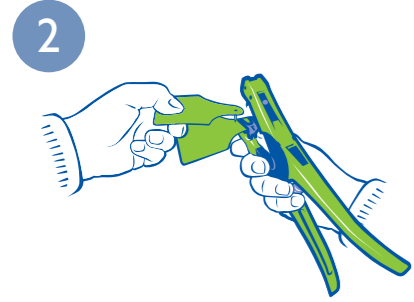
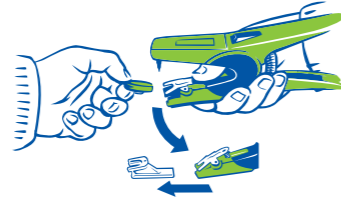


## Correct Tag Application Procedures

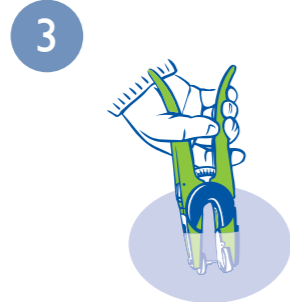


Remove insert for electronic cattle tags only.



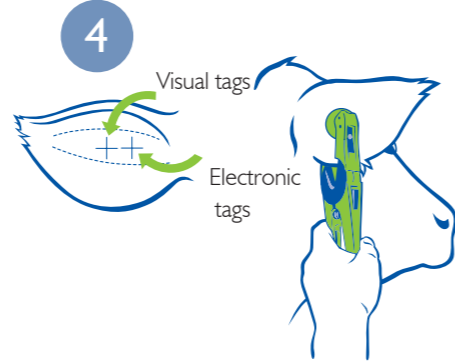
Slip male tag completely onto applicator pin.

**NB:** Make sure to use the 'special' electronic long stem male with electronic tags.



Dip jaws of applicator holding tag into antiseptic or disinfectant solution.

**NB:** Please make sure to use the correct dilution rates.



With the correct position located, apply the tag firmly, always with the male tag entering from the back (outside) of the ear. Electronic tags should be attached in the centre of the inside third of the ear.

Place the visual or electronic tag under the clip by depressing the lever. The female electronic tag has a lump on its printed face and a raised arrow on the inside face of the tag. Holding the lump between thumb and forefinger position the tag so the lump and arrow faces out of the open end of the applicator. Failure to do so may result in damage to the electronic tag. It is recommended that adult cattle are restrained in a head bail for tagging.

## Allflex Australia

For over five decades, Allflex have provided and supported the Livestock Identification industry with management devices that provide:

- superior product design and performance
- reliable on-time delivery
- dedicated technical support
- exceptional customer service

Allflex operates worldwide and has a presence in all major animal production markets. Allflex is ISO 9001 accredited ensuring continual improvement of its systems and maintaining and delivering the highest quality products and services. Use Allflex to manage your livestock and identify the difference.

### Need help?

Allflex supports its customers with a dedicated technical service helpline, highly trained field staff and a customer service department that is regarded as the best in the industry. For assistance call 1300 138 247.

## General Managers Guarantee

Allflex Australia is committed to providing the Australian livestock identification industry with proven and trusted, high performance products that meet the needs of your business. We are dedicated to delivering our products to you on-time and strive to provide you with exceptional customer service. I encourage you to provide us with feedback on our performance so that we can continue to improve. Should you have any concerns with Allflex products and services please contact the Customer Service Team. If you are not completely satisfied with the action taken to resolve any product or service concerns, it is my guarantee as General Manager to liaise with you directly to achieve a successful outcome. We look forward to supporting your business.



To provide us with any comments or feedback on Allflex products and services please contact our customer service team on 1300 138 247 or email [customerservice@allflex.com.au](mailto:customerservice@allflex.com.au)

*Shane McManaway, General Manager, Allflex Australasia*



Identify the Difference

# Livestock Identification

## Visual and Electronic Tags and Equipment



© Copyright Allflex 2011

[www.allflex.com.au](http://www.allflex.com.au)



Identify the Difference



# Two Piece Tags

Allflex two piece tags have been used by Australian farmers for decades. Our products are proven and trusted and supported by first class logistics, customer service and full support.

Please note: Tags shown at actual size



## LAZATAG™

- Proven design
- Outperforms other shapes in retention and durability

### Blind Male Tip

- Enables easy application
- Assists in eliminating disease transfer
- Securely locks the two tags together

### Swivel Collar

- This unique feature allows the tags to automatically find their own point of gravity

### Marking Options

For more information about LazaFX and other marking options please refer to the marking pages.



Tag knife 86

Flip pin action reduces chance of tearing the ear



Universal Applicator 80

Identifier Applicator 83

Suitable for the application of Allflex NLIS cattle tags, visual cattle tags and RFID sheep tags.



Lazamatic Applicator 85

Suitable for the application of Allflex visual cattle tags. Fast pin retraction reduces the chance of ear tearing.



Ultramatic Applicator 85U

Suitable for the application of Allflex NLIS cattle tags. Fast pin retraction reduces the chance of ear tearing.

Maxi Female 08 ✓  
99mm x 73mm

LazaFX is a premium marking technology from Allflex that incorporates permanent Laser Marking with a coating of pitch black ink producing the most visible marking available. Only tags indicated with a ✓ can be marked using LazaFX.

**Please note:** LazaFX marking is the default print option where possible. Laser only marking can still be requested if preferred.



Identify the Difference



# Feedlot Tags

Feedlot Tag FL



## One Piece Feedlot Tags

- One-piece tag engineered for retention and readability
- Tags hang straight in the ear, allowing for easy viewing by pen riders
- Large panel for multiple lines of information and custom marking
- Blank and stamped options available
- Stamping options include lot numbering, sequential numbering and bar codes

## Feedlot A Tag

- Easy one piece application
- Self piercing pin hole tip means faster healing and reduced animal stress
- Same colours as standard Allflex feedlot tag range



## Pneumatic Feedlot Tag Applicator

- Supplied on a free of charge loan basis



## Manual Feedlot Tag Applicator

- Replacement anvil and pin available

## Applicators

The application of Allflex Feedlot Tags can be performed with the Manual Flip-Pin Applicator or for the high volume user the Pneumatic Flip-Pin Applicator. Both Feedlot Applicators have been designed for safe and easy use.

## Feedlot Tag Colour Range



# One-Piece A-Tags

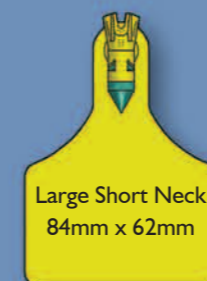
## One-Piece Tagging Alternatives

Allflex's new highly versatile A-Tag is designed for longterm application as a one piece tag option.



- Easy one-piece application
- Self-piercing, pinhole tip means faster healing and reduced animal stress
- Higher retention with longer tag anchor in thick-eared animals

## A-Tag Sizes



A-Tags are available in the same colour range as the Allflex two piece tag range.



Identify the Difference



# Marking Options

## LazaFX Pitch Black Marking

LazaFX is a premium high quality marking technology from Allflex. LazaFX is a coating of pitch black ink that is applied over permanent Laser Marking. This combination produces the most visible marking available.

Additionally the proven and trusted Allflex Optimark process provides a shiny non-stick film that protects the face of the tag from dirt and slows the effects of UV exposure.

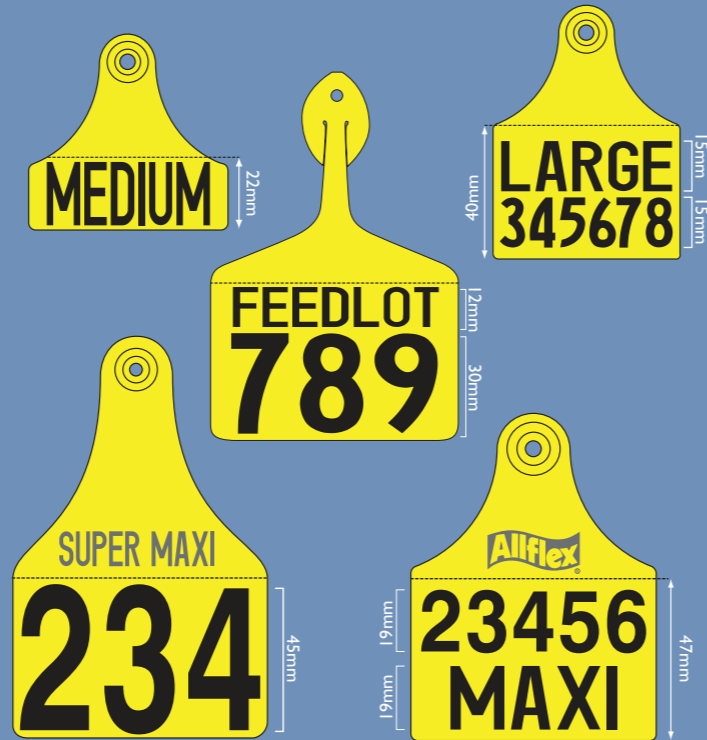
Logos are unable to be printed in LazaFX. Only alphanumeric characters can be printed in LazaFX.



## LazaFX Specifications

Print height / Tag Size	Maximum number of characters per line	
	1 line print	2 line print
<b>12mm</b>		
Med	8	-
Large	8	6
Maxi	9	8
Super Maxi	9	8
Feedlot	9	8
<b>15mm</b>		
Med	6	-
Large	6	-
Maxi	8	7
Super Maxi	8	7
Feedlot	8	7
<b>19mm</b>		
Med	6	-
Large	6	-
Maxi	7	7
Super Maxi	7	7
Feedlot	7	7
<b>30mm</b>		
Med	-	-
Large	4	-
Maxi	5	-
Super Maxi	5	-
Feedlot	5	-
<b>45mm</b>		
Med	-	-
Large	-	-
Maxi	4	-
Super Maxi	4	-
Feedlot	4	-

## Marking Examples



The dotted line on the above diagrams represents the upper limit of the Optimark zone.

LazaFX is only available in the font sizes represented in the Specifications table. The Specifications table also advises maximum number of characters available for each tag size. FX can only be applied in the print area under the dotted line.

## Marking Tag Pens



Allflex marking pens ensure long lasting, highly visible marking designed to withstand the harshest of conditions. Supplied with both fine and broad tips and available in two colours, white and black.

LazaFX is now the default print option where possible. Enjoy the benefits of premium quality marking at no extra charge!

## Custom Marking



Allflex marking technology provides you with a range of custom marking options including logos, barcodes and line art. Allflex tags can also be used for more than just animal applications.

Some examples include safetytags, luggage tags and horticulture and viticulture applications. Contact us to discuss your requirements.



"LazaFX is the blackest, easiest to read marking and has provided me with proven results. I highly recommend it to any farmer." Adam Wieland, Millhaven Jersey Stud



Identify the Difference



# Allflex Sheep Tags

## The Complete Sheep Tag Solution

Allflex have a wide range of visual identification tags and products suitable for NLIS sheep tagging or general flock management.

## One Piece Tag Range



### FlockTags 19

- NLIS compliant
- Extra length for large, easily read numbers and/or letters
- Simple operation
- 14 highly visible colours
- One and two line stamping options available



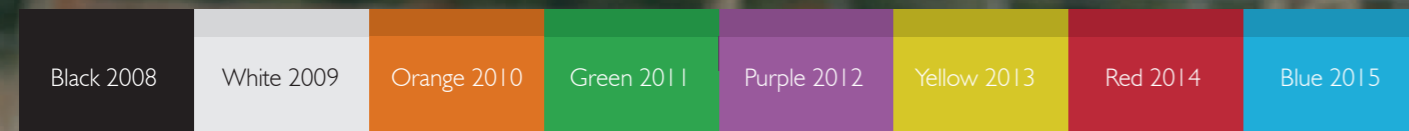
Brass Tags 20  
Nickel Tags 21



### FlexiTag 15

- NLIS compliant
- Alpha numeric and printing options
- 12 colours available
- Ideal for lamb applications
- One and two line stamping options available
- Supplied in strips of 25

## Australian Year Colours



## Electronic Sheep Tags



Closed head tamperproof lightweight RFID Sheep Tags. NLIS compliant.

Open cup reusable lightweight RFID Sheep Tags. Suitable for on-farm flock recording and management.

## Sheep Tag Applicators



### One shot Applicator 51

- Suitable for the application of Allflex brass and nickel tags

### FlockTagger 29

- Ensures quick and easy application
- Suitable for the application of Allflex FlockTags

### FlexiTagger 30

- Single shot applicator
- Tags and reloads in seconds
- Suitable for the application of Allflex FlexiTags

### FlexiMatic 31

- FlexiMatic V2 - New and improved!
- Stronger outer casing
- Stainless steel internal springs and screws
- Redesigned internal components to improve robustness.
- Semi-automatic applicator that can apply 25 FlexiTags before reloading
- Suitable for the application of Allflex FlexiTags



Identify the Difference



# Electronic Cattle Tags & Readers

With an increased focus on precision livestock management, electronic identification has become an integral part of everyday farm practices. To assist farmers, Allflex has developed a range of radio frequency identification (RFID) products that ensure compliance with regulatory requirements and assist in improving farm and livestock productivity and efficiency.

Allflex NLIS devices are made from the highest quality plastic and manufacturing process that ensures the best retention and resistance to infection. The tags are fast and easy to apply and are designed to withstand the harshest of conditions.

Proven and trusted  
Allflex NLIS Cattle Tags  
Outstanding retention & reliability



## NLIS Approved Cattle Tags

Through significant research and development Allflex has designed an NLIS device that delivers superior retention and readability performance, supported by a knowledgeable field and customer service team.

*"Through the robustness and reliability of the Allflex equipment we are saving heaps of time"* Carl Young, Ridgy Didge Greymans

### RS320 Yellow Stick Reader

The most popular RFID reader in the market. Bluetooth option available. Removable internal battery.



Display with counter

Removable serial cable

## Matching Management Tags



Allflex Matching Management Tags offer a visual tag with an ID number that corresponds to the NLIS tag, and are packaged conveniently together for easy application.



## RS320 Scanner Packages

RS320 Standard Package Includes; scanner, serial cable, trickle charger, software and emergency backup cable.

RS320 Proscanner Kit (pictured) Includes; scanner, 2 x serial cables, desktop rapid charger (with 3 interchangeable batteries), rugged carry case, 2 x emergency backup cables and software.

## DNA Tags



DNA tags provide a simple but effective means of integrating animal identification with DNA technology. DNA tags ensure traceability and proof of ownership and enable testing for parentage or production traits. Hair samples are easy to store and last indefinitely.



### Allflex Data logger

- Connects to PNL4060 Panel Reader
- Large easy to read counter
- Store thousands of records on a removable SD memory card
- Ability to store mobs in separate files
- Ideal for Pedigree Matchmaker applications for sheep or cattle loading options



### PNL4060 Panel Reader

- Powered from a 12 volt battery or an option for 240v
- Connects directly to weigh scales or computer
- Pre-drilled for easy attachment
- Robust yet very light and easy to transport
- Fitted with a tuning meter, power indicator, read indicator lamp and beeper volume control

## Fully Automated Panel Reader Model 8152

- Review RFID records and data on a backlit LCD screen
- Scroll keys to view menu and data
- Reliable and easy to use - No tuning required
- Up to 10 hours continual use from one full battery charge
- Reads all ISO 11784/11785 compliant products
- Compatible with all major scales and software
- Up to 100,000 RFID storage
- Up to 1,000 sessions with a maximum of up to 4,000 RFID's per session



## One Piece Wand 7020 "The Stocky"

- Reliable and easy to use
- Lightweight and ergonomically balanced
- Up to 30 hours of battery life
- Reads all ISO 11784/11785 compliant products
- Compatible with all major scales and software
- Up to 10,000 RFID storage
- Up to 1,000 sessions with a maximum of up to 4,000 RFID's per session



Identify the Difference